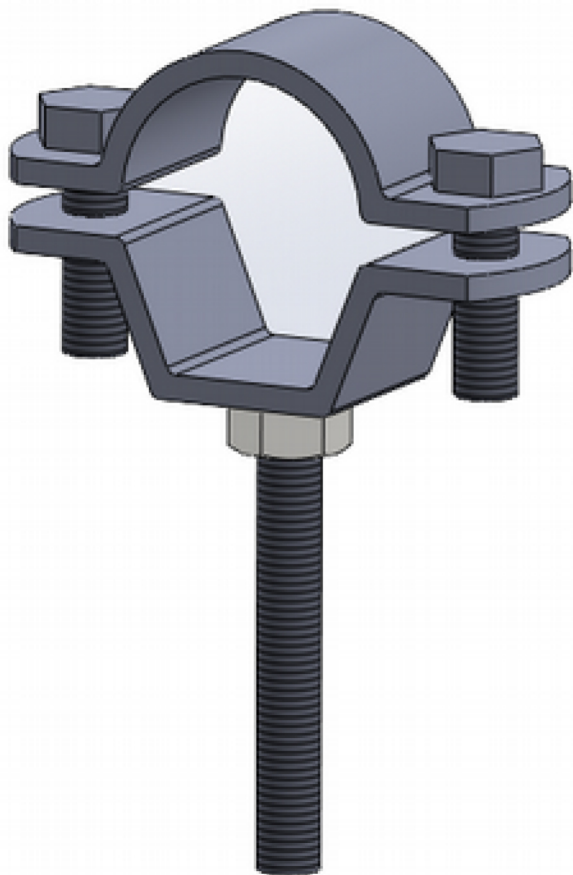
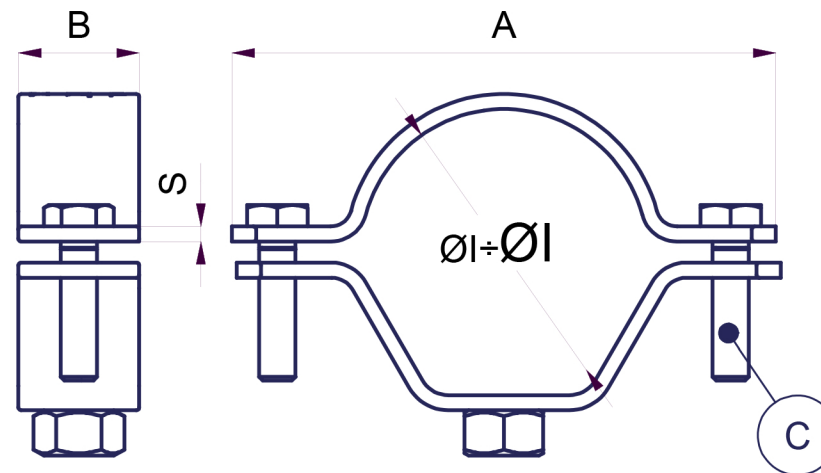






SISTEMI DI SUPPORTO – UNTERSTÜTZENDE SYSTEME

PIPING SUPPORT SYSTEMS



Collari NV



codice	Ø Tubo	ØI ÷ ØI [mm]	A ± 2 [mm]	B [mm]	S [mm]	C [mm]					Fv [Kg]	Note
NV.1	3/8"	16÷20	54	20	2,5	M6x20	M8	M8 x 80	10 x 50	10	350	
NV.2	1/2"	20÷24	60	20	2,5	M6x20	M8	M8 x 80	10 x 50	10	350	
NV.3	3/4"	25÷30	65	20	2,5	M6x20	M8	M8 x 80	10 x 50	10	350	
NV.4	1"	32÷36	73	20	2,5	M6x20	M8	M8 x 80	10 x 50	10	350	
NV.5	1.1/4"	38÷44	86	20	2,5	M6x20	M8	M8 x 80	10 x 50	10	350	
NV.6	1.1/2"	46÷50	91	20	2,5	M6x20	M8	M8 x 80	10 x 50	10	350	
NV.7	2"	58÷62	106	20	2,5	M6x20	M8	M8 x 80	10 x 50	10	350	
NV.8	2.1/2"	74÷80	122	30	2,5	M6x20	M10	M10 x 100	12 x 60	12	350	(*)
NV.9	3"	84÷89	137	30	2,5	M6x20	M10	M10 x 100	12 x 60	12	350	(*)
NV.10	4"	112÷118	164	30	2,5	M6x20	M10	M10 x 100	12 x 60	12	350	(*)
NV.11	5"	134÷138	192	30	2,5	M6x20	M10	M10 x 100	12 x 60	12	350	(*)
NV.12	6"	164÷172	218	30	2,5	M6x20	M10	M10 x 100	12 x 60	12	400	(*)
NV.13	8"	219÷225	279	30	2,5	M6x20	M 1 0	M10 x 100	12 x 60	12	400	(*)

Vite a doppio filetto e tassello plastico a parte

(*)- Base collare di forma circolare

Fv - Carico raccomandato di trazione.

Typology of material A=electrolytic galvanized Steel B=Hot-dip galvanized Steel C=INOX stainless Steel 304 M=Pre-galvanized Steel - Tipologia Materiale A=Acciaio zincato elettrolitico B=Acciaio Zincato a caldo C=Acciaio INOX 304 M=Acciaio Zincato Sendzimir - Materialtypologie A=elektrolitisch verzinkter Stahl B=feuerverzinkter Stahl C=rostfreier Edelstahl 304 M=Zinkstahl Sendzimir
Dimensions in this catalogue are in millimeters, those with X value can be varied on demand - Le quote espresse nel catalogo sono in mm e quelle con valore X sono variabili a richiesta - Sämtliche Abmessungen im Katalog sind in mm und jene mit X gekennzeichneten können Ihren individuellen Wünschen angepasst werden