

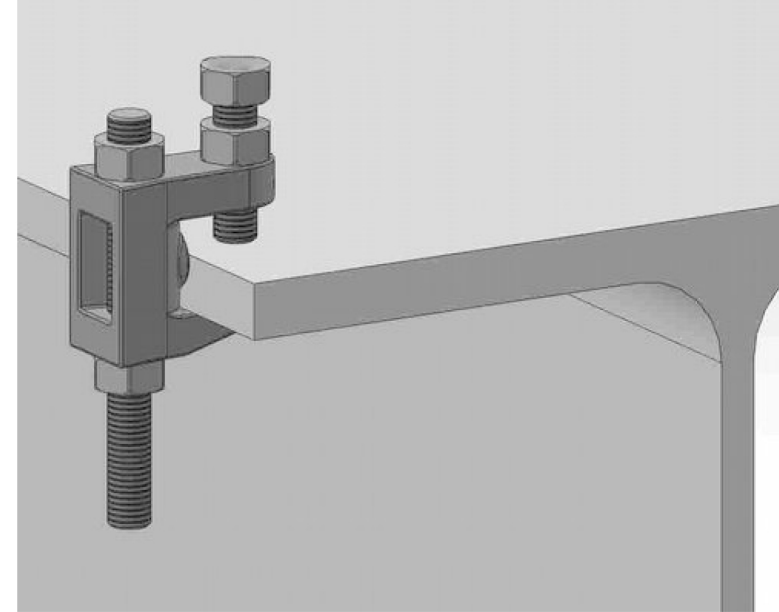
# PIASTRE DI CONNESSIONE - VERBINDUNGSPLATTEN

## ACCESSORIES

### ART. 429 - 429.C

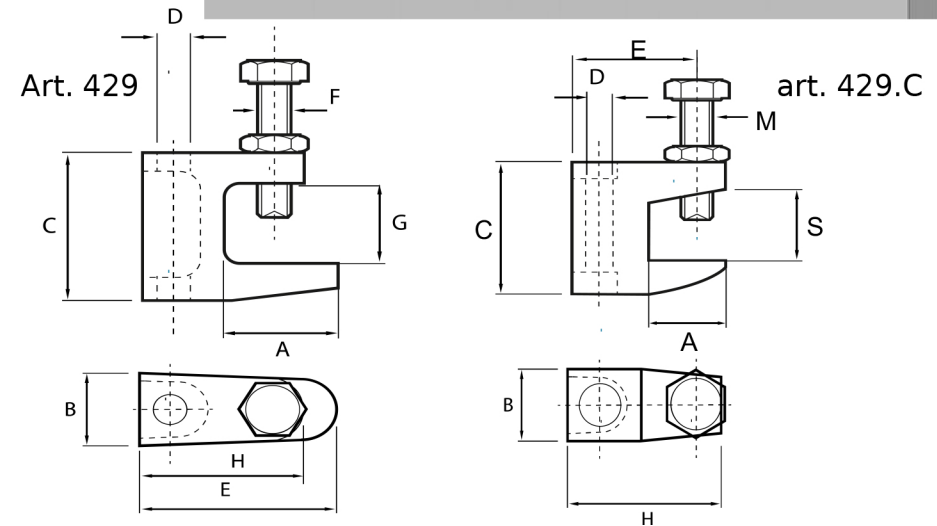
| Art. 429      |        |        |        |                               |        |     |        |        |                 |                         |
|---------------|--------|--------|--------|-------------------------------|--------|-----|--------|--------|-----------------|-------------------------|
| Code / codice | A [mm] | B [mm] | C [mm] | D [mm]                        | E [mm] | F   | G [mm] | H [mm] | load/carico [N] | Approval/certificazione |
| 429.1         | 21     | 19     | 35     | M8/φ9                         | 35     | M8  | 18     | 38     | 1200            | VDS, UL                 |
| 429.2         | 23     | 21     | 42     | M10/φ11                       | 41     | M10 | 20     | 44     | 2500            | VDS, UL, FM             |
| 429.3         | 32     | 23,5   | 54     | M12/φ13                       | 48     | M10 | 26     | 58     | 3500            |                         |
| 429.4         | 26     | 29,5   | 58     | M10-M12-M16/<br>φ11, φ13, φ17 | 55     | M12 | 28     | 58     | 5500            | none/nessuna            |
| 429.5         | 44     | 55     | 78     | φ13                           | 55     | M12 | 45     | 71,5   | 3500            |                         |

Material: malleable cast iron body; Finish: galvanised ISO 4042, on request hot dip galvanised ISO 1461  
 Materiale: ghisa malleabile; Finitura: zincatura galvanica ISO 4042, a richiesta zincatura a caldo ISO 1461



| Art. 429.C |                |        |        |        |        |        |        |        |                 |
|------------|----------------|--------|--------|--------|--------|--------|--------|--------|-----------------|
| codice     | Thread/filetto | S [mm] | A [mm] | B [mm] | C [mm] | D [mm] | E [mm] | H [mm] | load/carico [N] |
| 429.1.C    | M8             | 0 - 16 | 21,5   | 21     | 38     | 9      | 34     | 41,5   | 1000            |
| 429.2.C    | M10            | 0 - 16 | 21,5   | 21     | 38     | 11     | 34     | 41,5   | 1000            |
| 429.3.C    | M12            | 0 - 16 | 21,5   | 21     | 38     | 13     | 34     | 41,5   | 1300            |

Material: stainless steel (A2 or A4)  
 Materiale: acciaio inossidabile (A2 or A4)



Typology of material A=electrolytic galvanized Steel B=Hot-dip galvanized Steel C=INOX stainless Steel 304 M=Pre-galvanized Steel - Tipologia Materiale A=Acciaio zincato elettrolitico B=Acciaio Zincato a caldo C=Acciaio INOX 304 M=Acciaio Zincato Sendzimir - Materialtypologie A=elektrolitisch verzinkter Stahl B=feuerverzinkter Stahl C=rostfreier Edelstahl 304 M=Zinkstahl Sendzimir  
 Dimensions in this catalogue are in millimeters, those with X value can be varied on demand - Le quote espresse nel catalogo sono in mm e quelle con valore X sono variabili a richiesta - Sämtliche Abmessungen im Katalog sind in mm und jene mit X gekennzeichneten können Ihren individuellen Wünschen angepasst werden